

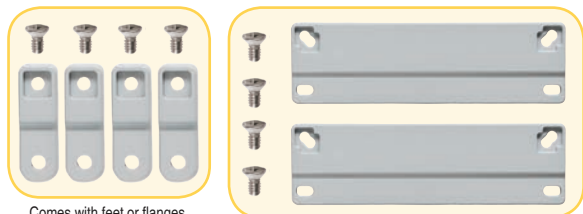


## PREMIUM POLYCARBONATE ENCLOSURE

### Features and Benefits

- 16 Standard configurations including hinged or non-hinged lids in 2-screw, 4-screw, or stainless steel metal latched lids.
- Standard color – light gray with a gloss finish.
- Best material – bases, opaque covers and clear covers are all made of high-impact, UV resistant polycarbonate.
- Easy ordering – one part number includes base, lid, mounting feet or flanges and all lid fastening hardware (mounting panels sold separately).
- Flexible interior mounting – features the unique and patented Integra adjustable depth “T-Rail” back panel mounting system (back panel and adjustable brackets sold separately).
- Features multiple bosses for easy installation of devices and DIN rails.
- UL-50 / c-UL Listed (files # E229365, # E207562)

Our Premium Line enclosures are the most durable, aesthetically pleasing, non-metallic Nema UL rated enclosures available. From the extremely versatile mounting options inside the enclosure to having the most off-the-shelf accessories, the Integra “Made In the USA” Premium Line enclosures provide great value to any application.



Comes with feet or flanges.



Atex pending, contact factory for details

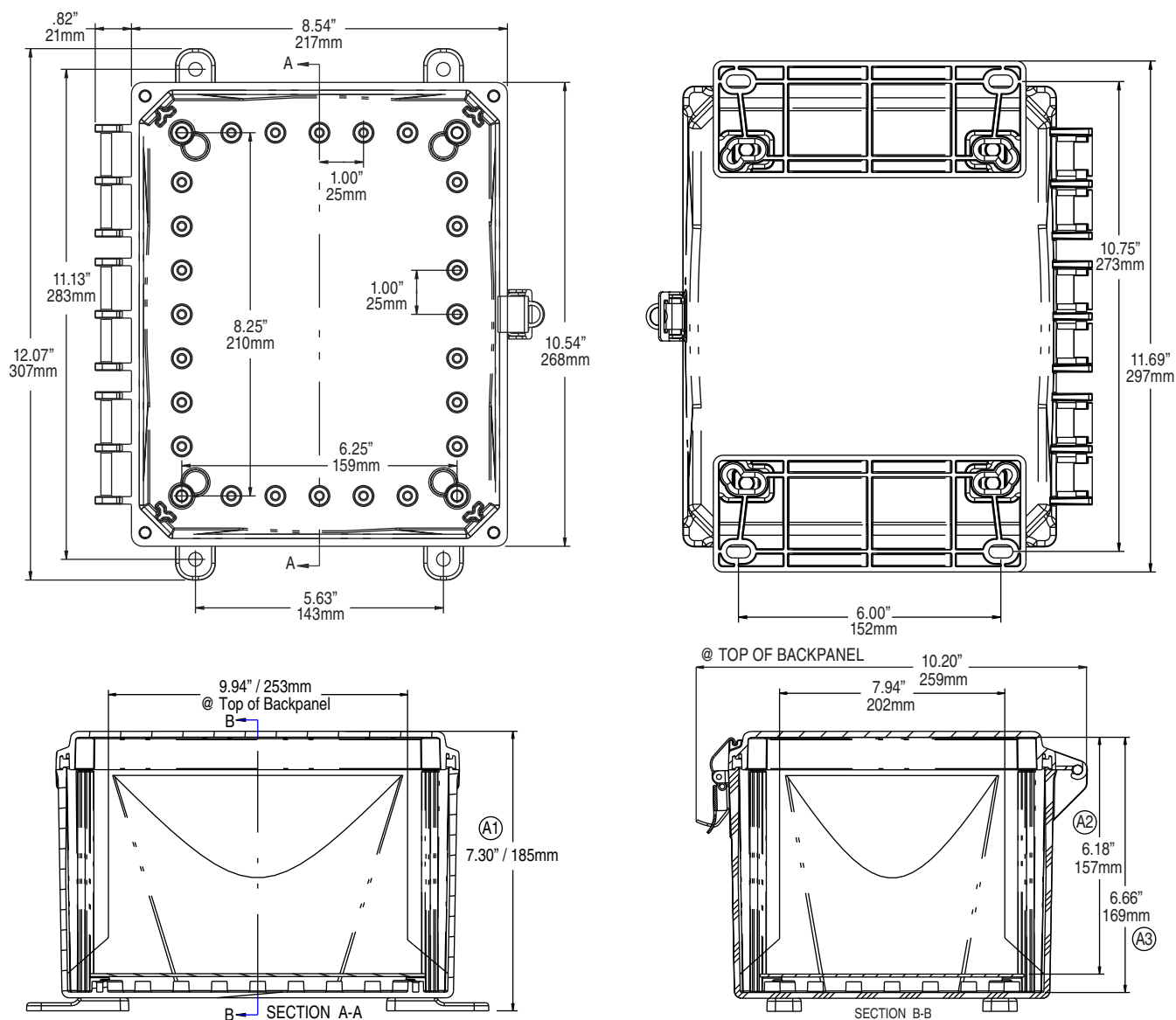
| Mechanical and Thermal           | Test Spec. | Unit   | Premium Line |
|----------------------------------|------------|--------|--------------|
| Instrumented Dart Impact @ 73° F |            | in/lb. | 565          |
| Falling Ball Impact @ 73° F      | UL-746     | in/lb. | 900          |
| Deflection Temperature @ 264 psi | ASTM D648  | Deg. F | 270          |
| Modulus of Elasticity            | ASTM D790  | ksi    | 340          |
| Temperature Range                |            | Deg. F | -40 to 265   |
| Flammable / UV Ratings           | Test Spec. | Unit   | Premium Line |
| Flame Rating - UL                | UL 94      | -      | 5VA          |
| Outdoor UV Exposure              | UL         | -      | F1           |

| 10086 P/N    | 4X<br>IP66 | 6P<br>IP68 | Hinged<br>Cover | Screw<br>Cover | Opaque<br>Cover | Clear<br>Cover | Mounting<br>Feet | Mounting<br>Flange | Stainless Steel<br>Locking Latch | T-Rail<br>System |
|--------------|------------|------------|-----------------|----------------|-----------------|----------------|------------------|--------------------|----------------------------------|------------------|
| H10086S      | ✓          | ✓          |                 | ✓              | ✓               |                | ✓                |                    |                                  | ✓                |
| H10086SC     | ✓          | ✓          |                 | ✓              |                 | ✓              | ✓                |                    |                                  | ✓                |
| H10086SF     | ✓          | ✓          |                 | ✓              | ✓               |                |                  | ✓                  |                                  | ✓                |
| H10086SCF    | ✓          | ✓          |                 | ✓              |                 | ✓              |                  | ✓                  |                                  | ✓                |
| H10086H      | ✓          |            | ✓               | ✓              | ✓               |                | ✓                |                    |                                  | ✓                |
| H10086HC     | ✓          |            | ✓               | ✓              |                 | ✓              | ✓                |                    |                                  | ✓                |
| H10086HF     | ✓          |            | ✓               | ✓              | ✓               |                |                  | ✓                  |                                  | ✓                |
| H10086HCF    | ✓          |            | ✓               | ✓              |                 | ✓              |                  | ✓                  |                                  | ✓                |
| H10086HLL    | ✓          |            | ✓               |                | ✓               |                | ✓                |                    | ✓                                | ✓                |
| H10086HCLL   | ✓          |            | ✓               |                |                 | ✓              | ✓                |                    | ✓                                | ✓                |
| H10086HFLL   | ✓          |            | ✓               |                | ✓               |                |                  | ✓                  | ✓                                | ✓                |
| H10086HCFLL  | ✓          |            | ✓               |                |                 | ✓              |                  | ✓                  | ✓                                | ✓                |
| H10086H-6P   | ✓          | ✓          | ✓               | ✓              | ✓               |                | ✓                |                    |                                  | ✓                |
| H10086HC-6P  | ✓          | ✓          | ✓               | ✓              |                 | ✓              | ✓                |                    |                                  | ✓                |
| H10086HF-6P  | ✓          | ✓          | ✓               | ✓              | ✓               |                |                  | ✓                  |                                  | ✓                |
| H10086HCF-6P | ✓          | ✓          | ✓               | ✓              |                 | ✓              |                  | ✓                  |                                  | ✓                |

TORQUE SPECIFICATIONS - Mounting Brackets - 1/4"-20 x 0.25 SS, countersunk phillips drive screws (torque limit = 20 in. lbs.) | Covers / Doors - Torque for corner screws is 10 in. lbs.



# 10X8X6 PREMIUM LINE



Register online to download this drawing off the Integra website at [www.integraenclosures.com](http://www.integraenclosures.com) | Your company's logo or other information on the lid. Consult factory for details.

## Accessories for 10x8x6 (For complete accessories, see page 49-52)



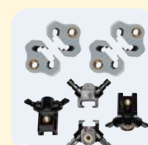
### Back Panels

**ABP108** - Aluminum panel  
**SBP108** - Steel panel  
**PVCBP108** - PVC panel



### Aluminum Swing Out Panels

**ABP-108USP/USOPK** - Complete panel kit  
**ABP-108USP** - Aluminum swing out panels only  
**USOPK** - Hardware only



### Back Panel Adjustment Kit

**BPAKG** - Gray, Set Screw  
**BPAKB** - Black, Set Screw  
**UBPAKG** - Gray, Thumb Screw  
**UBPAKB** - Black Thumb Screw



### Air Vents

**VENT 1** - Aluminum louvered  
**VENT 2** - Outdoor labyrinth



### Steel Swing Out Panels

**SBP-108USP/USOPK** - Complete panel kit  
**SBP-108USP** - Steel swing out panels only  
**USOPK** - Hardware only



### Cord Grips

**IP68/NEMA 4X/6P** rated  
See page 54 for more details and part numbers.



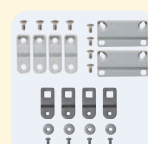
### Din Rail

**DIN 8** - 2 rails, 4 screws



### Pole Mounting Kit

**PMKG-28** - 2" pole  
**PMKG-38** - 3" pole  
**PMKG-48** - 4" pole  
**PMKG-128** - 12" pole



### Mounting Feet & Flange Kits

**MFKG** - Premium line feet  
**MFKSS** - Stainless steel feet  
**MFLK8** - 8" Flange kit